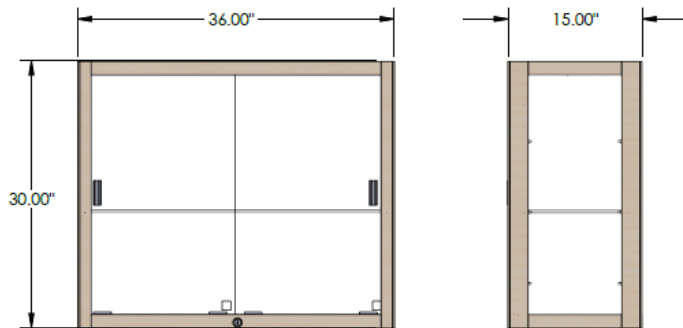


Heirloom Case Collection (894)



Shelving:

- 1 Full-Size Shelves
 - Shelf Dimensions: 12"x34"x¼"
- Support wires allow for some adjustability in the shelf.
- The shelf has a capacity of 25 lbs.

Doors:

- Sliding doors that open from both sides for easy access. Door handles are stick-on clear plastic doorpulls.
- Lock mechanism is the Selby-033 cam lock that comes with 2 keys.

Lighting:

- Lighting is not available on the 894 unit.

Materials:

- Case frame is made of poplar wood.
- Cases are available in a variety of wood stain finishes. Color matching is available.
- Cases are available with a variety of back options.

Assembly/Weight/Shipping:

- Cases arrive semi-assembled. Installers will need to unpack/untape the unit, install the shelves, install the door handles, and hang the case. A hanging template is provided to simplify the mounting process.
- Cases are approximately 110 lbs.
- Cases will arrive on a pallet shrink-wrapped and packaged for safe arrival.

